

October 16th – October 28th

First off we all would like to thank Mr. Glowacki for his help in laying up the fiberglass body. We were able to get the entire nose cone, body cover, and tail cone done in one afternoon. We also were able to finish the safety halo, and started welding the back end. The halo bars were cut to the correct length and were able to bend the halo bars to the correct angle to fit nicely on top of the chassis. The cross bars were machined and welded them to the safety halo. The square tubing was cut for the back end. The tubing was cut at 45 degree angles. But the lengths were slightly off so we ground down the end of the tubes. The back end lined up after some minor adjustments were made. We are now designing the front end, seat, pedals and steering wheel.

-Halo system fully welded and supported.



-Car as of 10/28/09.



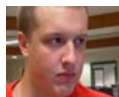
-Kill switch plate fully welded



-Front view of car



Can you find Eric Simon and his jump drive???



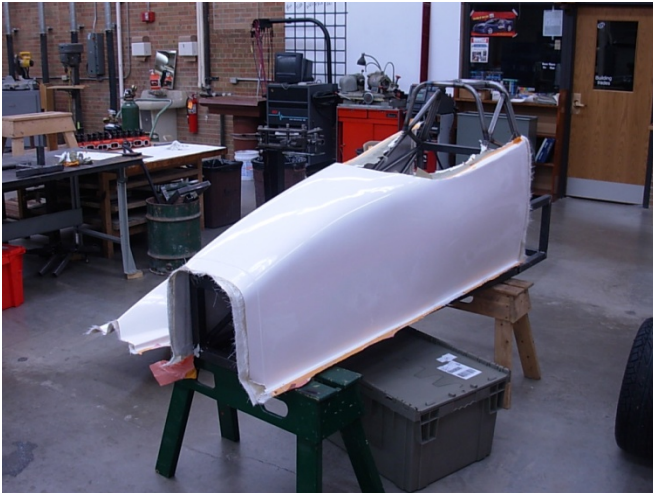
or



-Nose Cone



-Main Body



-Tail Cone

